

B'FLEX - System Description

B'FLEX - Description du système


Revision	Date	Description	Author	Checked	Approved
0	19 Aug 22	Creation			

Table of content

- 1 GENERAL 2
- 2 ILLUSTRATED PART CATALOGUE / CATALOGUE D'ILLUSTRATION DES PIECES..... 3
 - 2.1 G1 CONFIGURATION..... 3
 - 2.2 NYNJA CONFIGURATION 4
 - 2.3 SUPERGUEPARD CONFIGURATION..... 5

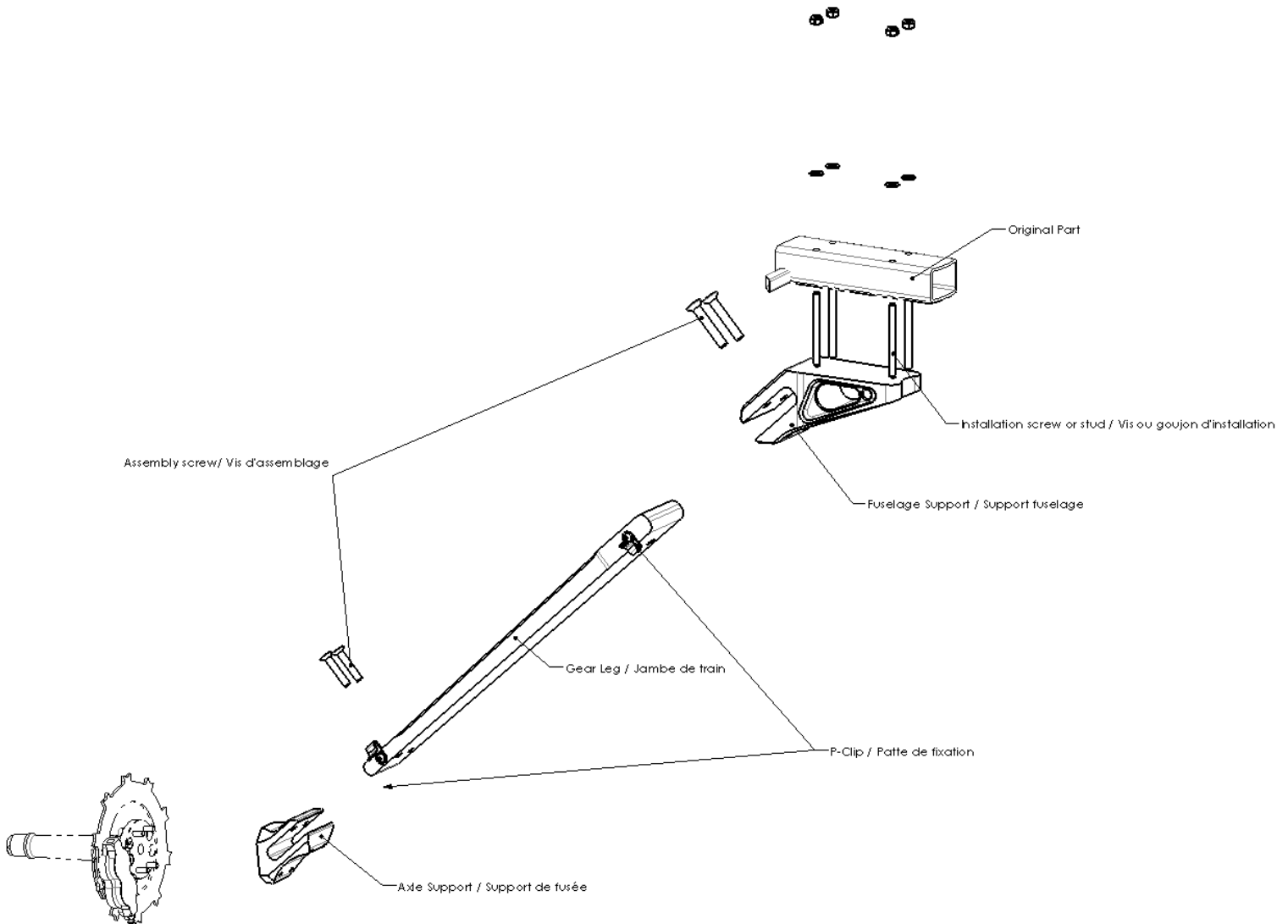


1 General

BERINGER B'FLEX is a design to add shock absorption to aircraft and lighten it. The system is designed to be bolted onto aircrafts of various shapes.

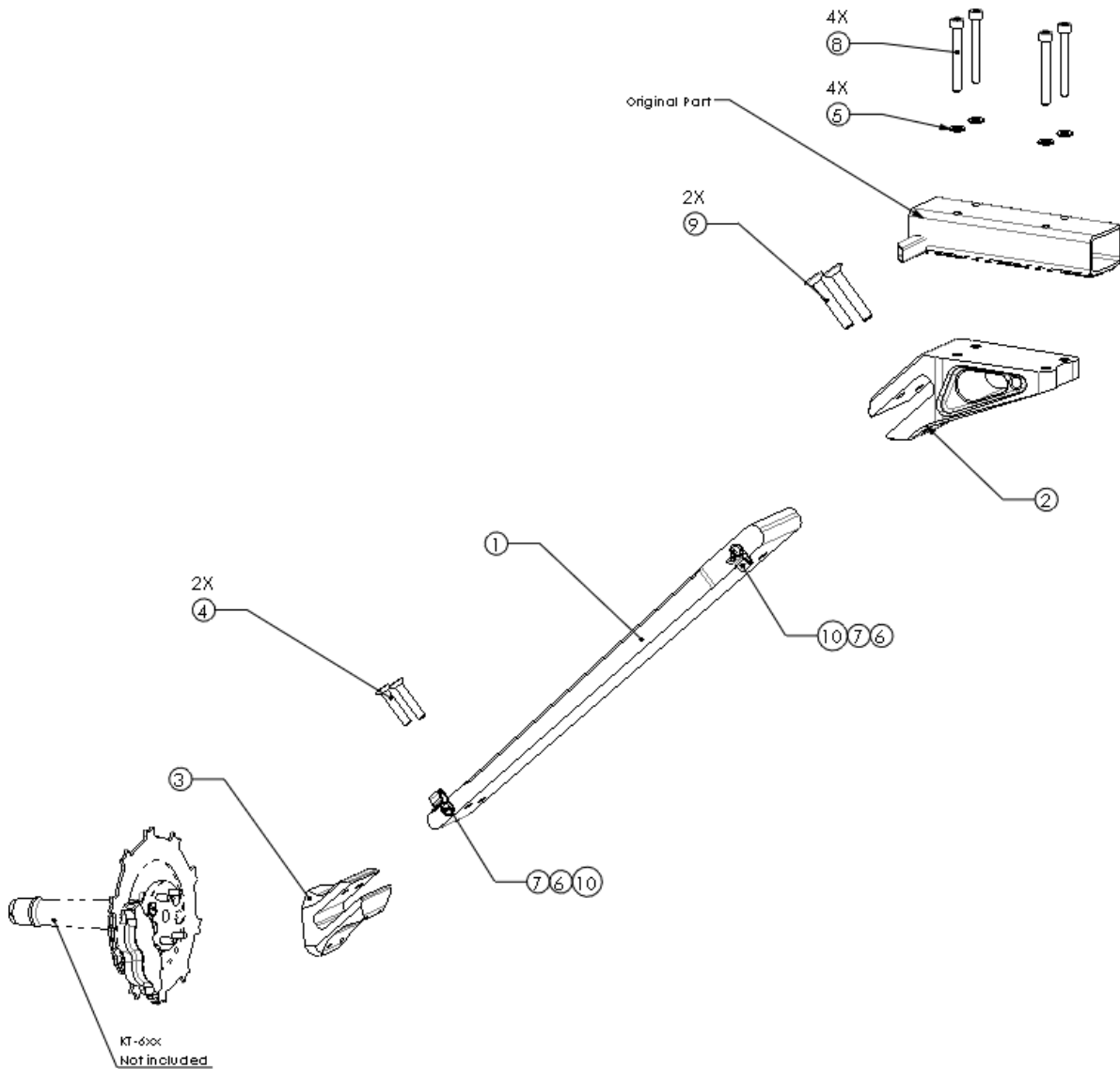
La B'FLEX BERINGER est une conception visant à amortir les chocs subis par l'avion ainsi qu'à l'alléger. Le système est conçu pour être fixé sur divers aéronefs.

2 System architecture / Architecture du système



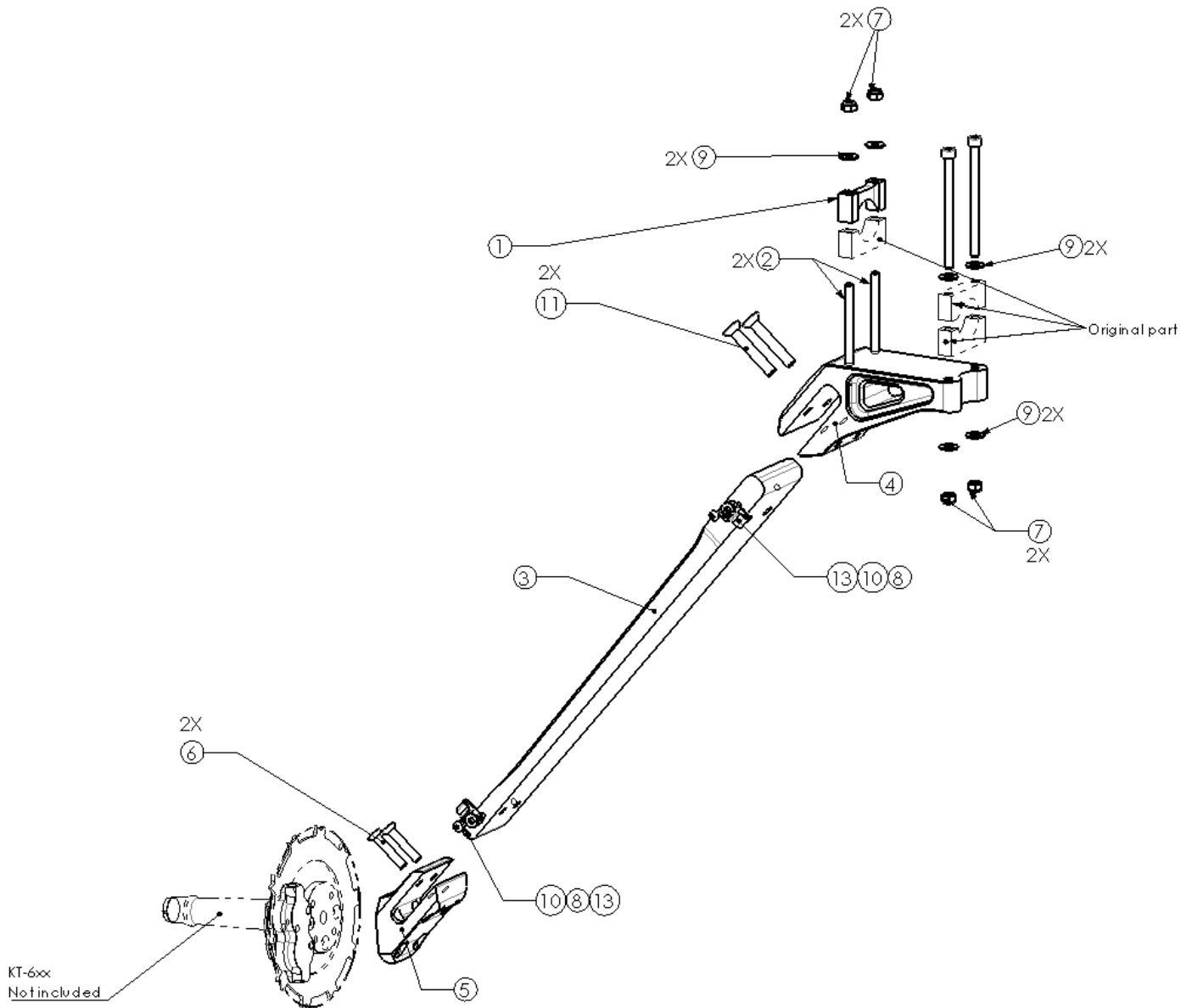
3 Illustrated part catalogue / *Catalogue d'illustration des pièces*

3.1 G1 configuration



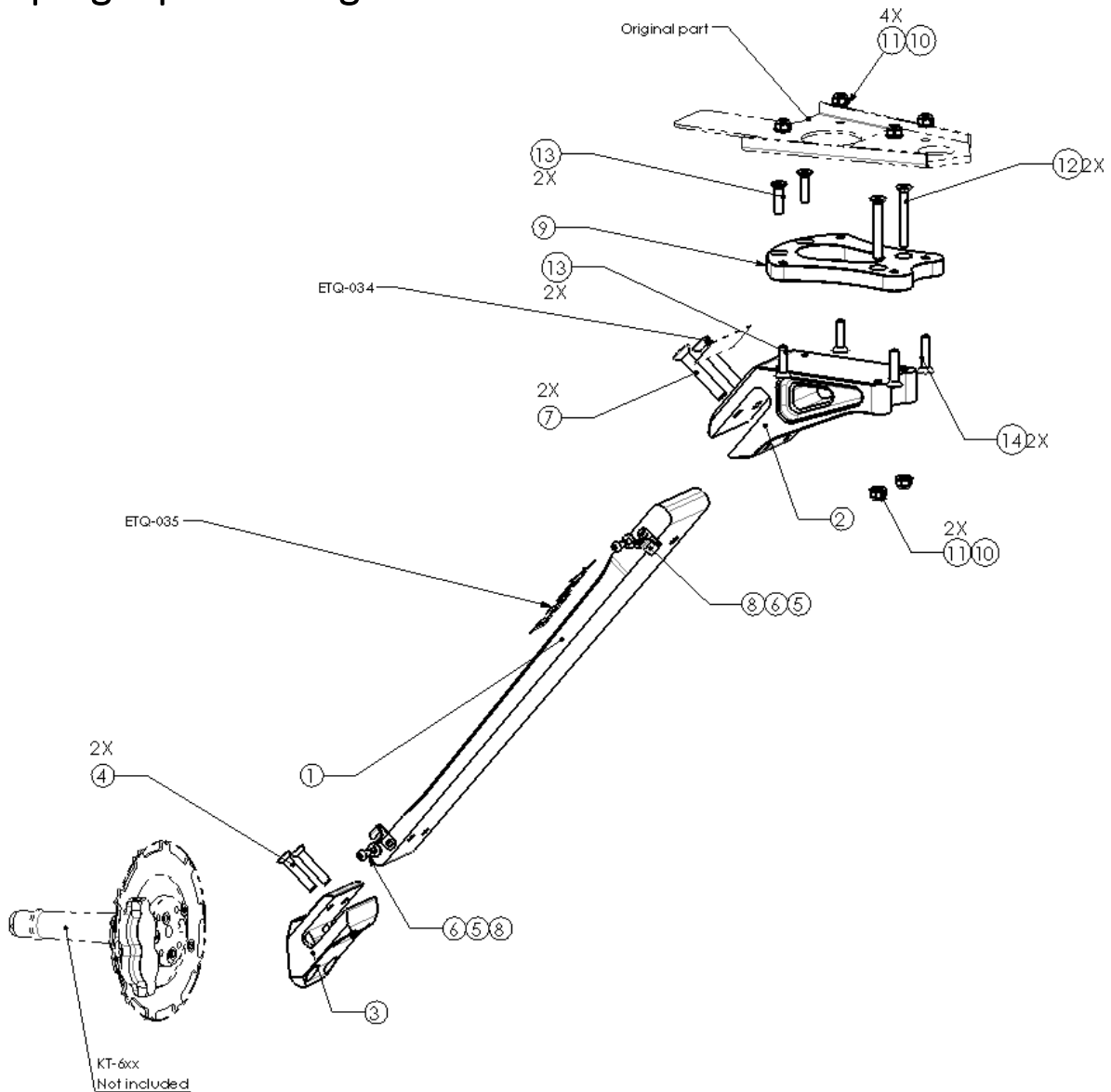
10	ZGA01	P-Clip / <i>Patte de fixation</i>	2
9	V-FHC-022	M10x60_Screw/Vis	2
8	V-CHC-069	M8x65 (Q12.9)_Screw/ Vis	4
7	V-BHC-004	M6-12_Screw/Vis	2
6	R-AP-008	M6_Washer / Rondelle	2
5	R-AP-007	Z8_Washer / Rondelle	4
4	VIS-036	M8x43 Special Screw/Vis	2
3	TLP-202	380x73x23_Axle Support / <i>Support Fusée</i>	1
2	TLP-102.37	380x73x23_Leg Support (37mm spacing)/ <i>Support de Lame (Ecartement 37mm)</i>	1
1	TLP-002	515x73x23_Leg Landing Gear / <i>Jambe de Train</i>	1
REP	PART NUMBER	DESCRIPTION	QTY.

3.2 Nynja configuration



13	ZGA01	P-Clip / Patte de fixation	2
12	V-CHC-067	M8x110 (Q12.9)_ Screw / Vis	2
11	V-FHC-022	M10x60_ Screw/Vis	2
10	V-BHC-004	M6-12_ Screw/Vis	2
9	R-AP-013	M8_ Washer/Rondelle	6
8	R-AP-008	M6_ Washer / Rondelle	2
7	E-HN-004	Self-locking Nut M8/ Ecrou NL M8	4
6	VIS-036	M8x43 Special Screw/Vis	2
5	TLP-201	NYNJA_Axle Support / Support Fusée	1
4	TLP-101.2	NYNJA_Leg Support / Support de Lame	1
3	TLP-012	"515x73x24_Light Duty Leg Landing Gear / Jambe de Train Souple	1
2	GOU-021	M8-100_ Stud / Goujon	2
1	AV-SKY-401	NYNJA_Clamp/Cavalier	1
REP	PART NUMBER	DESCRIPTION	QTY.

3.3 Superguepard configuration



14	V-FHC-030	M8x35 Screw/Vis	2
13	V-FHC-029	M8x30 Screw/Vis	4
12	V-FHC-028	M8x60 Screw/Vis	2
11	R-AP-007	Z8_Washer / Rondelle	6
10	E-HN-004	Self-locking Nut M8/ Ecou NL M8	6
9	AV-GUE-005	Super Guépard_B'Flex Adaptation Plate / Platine d'Adaptation B'Flex	1
8	ZGA01	P-Clip / Patte de fixation	2
7	V-FHC-022	M10x60_Screw/Vis	2
6	V-BHC-004	M6-12_Screw/Vis	2
5	R-AP-008	M6_Washer / Rondelle	2
4	VIS-036	M8x43 Special Screw/Vis	2
3	TLP-201	NYNJA_Axle Support / Support Fusée	1
2	TLP-101.2	NYNJA_Leg Support / Support de Lame	1
1	TLP-012	"515x73x24_Light Duty Leg Landing Gear / Jambe de	1
REP	PART NUMBER	DESCRIPTION	QTY.